



INNOVATION, MANAGEMENT AND  
TECHNOLOGY CONSULTANTS

PORTFOLIO OF  
SERVICES

# Providing effective solutions

CIGTECH SAS is a company dedicated to providing consulting services, innovation, research and scientific and technological development. We have a group of professionals dedicated to transform our clients' organizations through new business models. We develop strategies and implement solutions that help companies grow in a sustainable way and strengthen them by adding value to their processes.

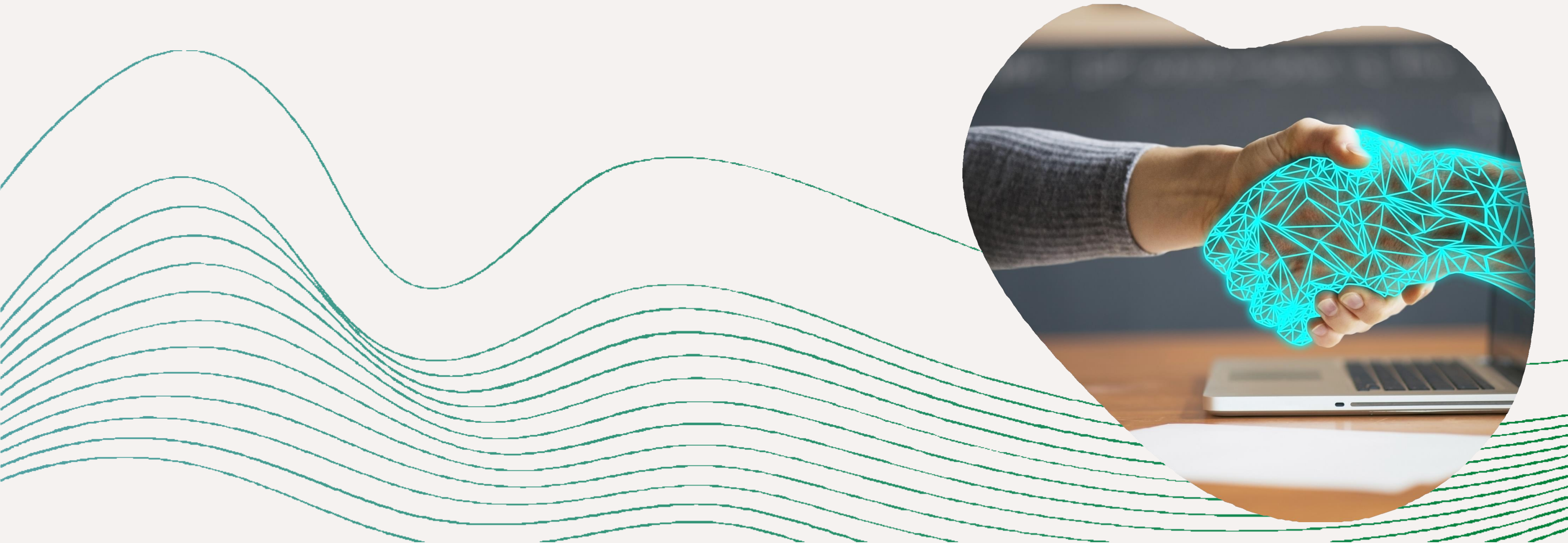


# Providing effective solutions

CIGTECH SAS has the knowledge, experience and capabilities necessary to execute and provide solutions to the needs demanded by the market in an efficient manner, maintaining close relationships with our customers, allowing us to know their needs to provide the right service and adjusted to their needs.

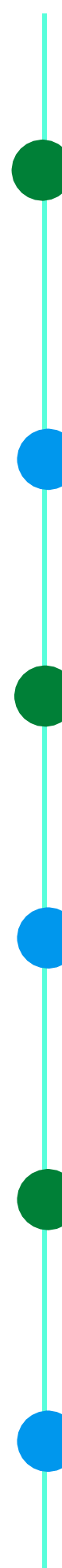


We offer our customers a combination of process knowledge, experience in consulting, software, applications and infrastructure. All this with the objective of helping our clients to improve their business strategies and become more competitive.





# Areas of Opportunity



- Compliance with deadlines for delivery to the areas of business, and within the estimated budget.

- Improve system quality, reducing production failures and maintenance cycles.

- Cost reduction (maintenance and support).

- Availability of more time and budget to attend to the business areas.

- To have controls and metrics for proper project management.

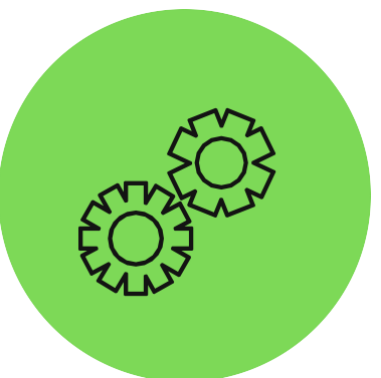
- Achieve a rapid evolution of your business processes.



Recognition on the complete understanding and vast experience of CIGTECH SAS working on successful services.

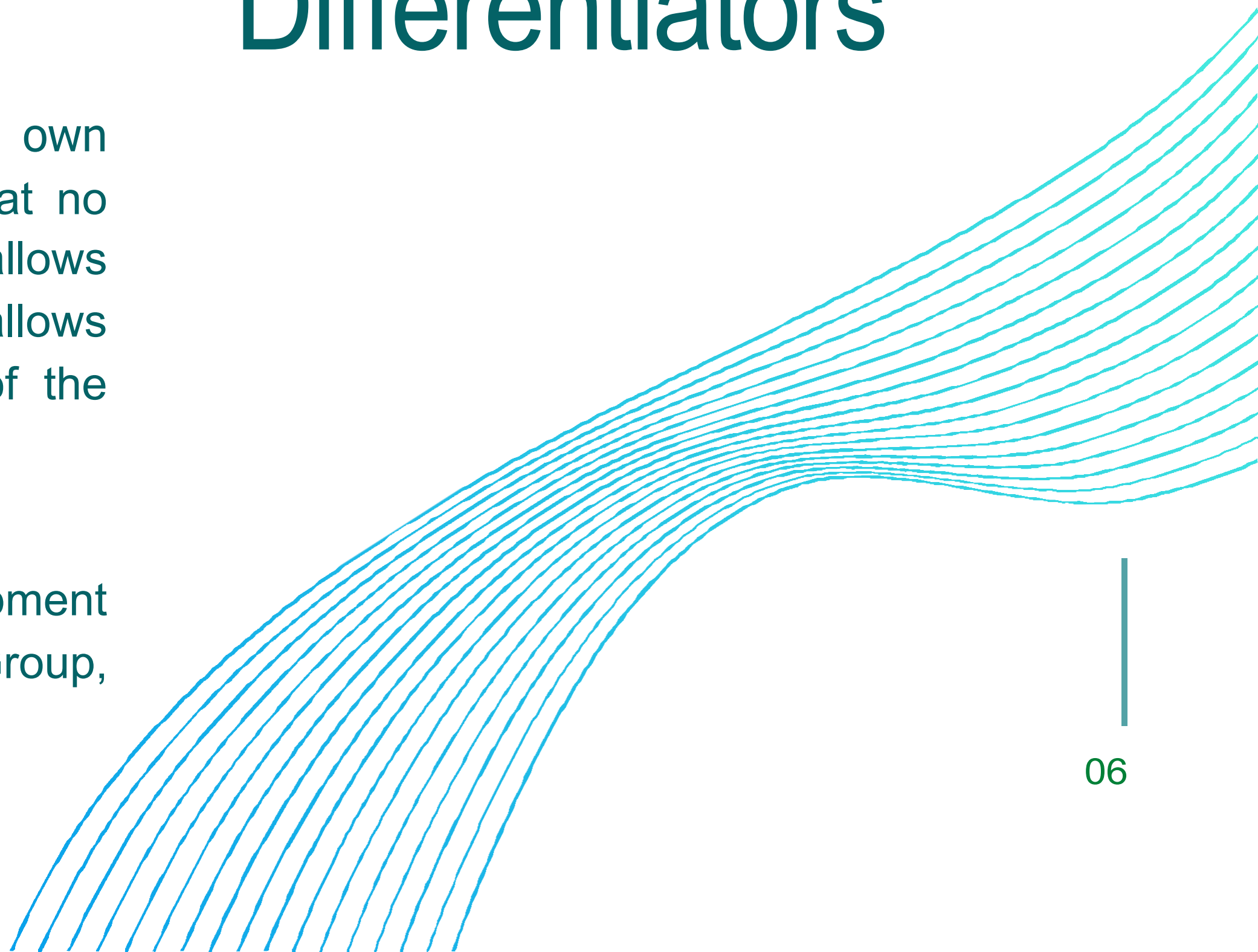


Use of CIGTECH SAS' own methodologies, tools and metrics, at no additional cost to the client, which allows for a comprehensive service that allows visualizing the value and benefit of the service.



Support for research and development teams of the GRIEPyS Research Group, category A1 of Colciencias.

# Differentiators



# What do we do?

## PRIMARY HEALTH CARE MODEL

- Medical Records System for patient characterization.
- Cohort follow-up system under the model of Integrated Health Care Routes (RIAS) with a focus on family health, health care, Integrated Health Risk Management, Differential and territorial approach. The system is based on a highly parameterizable scheme in which it is possible to define care pathways such as:
  - Health Promotion and Maintenance RIAS (Early Childhood, Infancy, Adolescence, Youth, Adulthood, old age).
  - Specific RIAS such as cardiovascular disease, cancer, nutrition, maternal, COPD, orphan diseases, occupational accidents, among others.

# What do we do?

## PRIMARY HEALTH CARE MODEL

- The cohort tracking system has the flexibility to adapt to the pathology to which it is applied. which are required to be tracked, including:
  - Sociodemographic classification of the population.
  - Population georeferencing with territorial emphasis.
  - Real-time patient alerts and clinical management notifications.
  - Cohort tracking dashboards including results, traffic lights and defined risk scales.



# What do we do?

## PRIMARY HEALTH CARE MODEL

- Management system for basic health units, including processes of:
  - Scheduling and appointments. Admission of patients. Cashier and collections.
  - Ordering, authorizations, management of agreements and filing of invoices.
  - API for interoperability with sampling laboratories and drug dispensers.
  - Document printing system.
  - Automatic reporting system (RIPS, Report 202, high cost accounts).
  - User management portal (self-management of appointments, online payments, self-management of orders and document downloads).
  - Clinical and administrative statistics and follow-up system.
  - Integration system with external data sources.

# What do we do?

## PRIMARY HEALTH CARE MODEL

- Management system for Health Benefit Plan Administration Entities (EAPB), including processes of:
  - Charging, validation and consolidation of high cost accounts (Renal Disease, HIV, etc.), Cancer, Hepatitis, Hemophilia, Arthritis).
  - Monitoring and compliance indicators for high-cost accounts. Uploading,
  - validation and consolidation of 4505 and 202-2021 reports.
  - Indicators of follow-up and compliance with the Specific Protection and Early Detection schemes and application of mandatory guidelines for Comprehensive Care of Public Health Diseases.


# OUR MAIN SERVICES

## CUSTOM SOFTWARE DESIGN, DEVELOPMENT AND/OR IMPLEMENTATION

We are specialists in the development of customized applications in different areas technology platforms.

Our software is built with iterative models, which allow us to develop more and more complete and complex versions, until reaching the final objective desired by the client, which allows us to deliver results in optimal times and adjusted to the needs of the business and users.

Additionally, we offer this service under the software rental modality (SaaS) where the developments are placed in the cloud and the client accesses them via internet through a user account, with the proper security schemes.



# OUR MAIN SERVICES

## INTEGRATED REAL-TIME INFORMATION SYSTEM FOR THE HEALTH SECTOR

Includes follow-up of low-risk cohorts.  
the Epidemiology of Services model, legal reports, follow-up of high-cost accounts, sociodemographic characterization of the population (applying the territoriality dimension in the environment of people and times).

The system allows the operation, control and management of the administrative and assistance processes of basic health units in real time.



# OUR MAIN SERVICES

## CONSULTING AND INNOVATION



We put our experience and knowledge at the service of our clients, advising them in the improvement of their business processes. We support our clients in the areas of:

- Strategic management of information systems and IT resources. Business
- Intelligence (BI).
- Business Process Management (BPM).
- Project Management.



# Solutions

## BASE SERVICES

- Development of software at a fixed price measure.
- SaaS (Software as a Service).
- Consulting Services.
- Integrated Information Systems for the Health Sector (IPS, EPS).

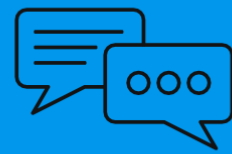


# Contact



EMAIL

[commercial@cigtechsas.com](mailto:commercial@cigtechsas.com)



MOBILE

+57 3103739054



MAILING ADDRESS

Postal Code 760035 Cali,  
Colombia



WEB

[www.cigtechsas.com](http://www.cigtechsas.com)